

Asgoft APP
UserGuide
(V1.2)

Contents

Asgoft APP	1
1. Registration and Login.....	3
2. Network Connection	3
3. Function Settings.....	6
4. Account Logout.....	9

1.Registration and Login

The login method for the Asgoft app is through password authentication.

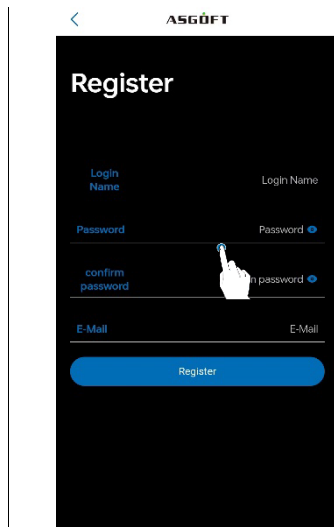


Figure 1-1

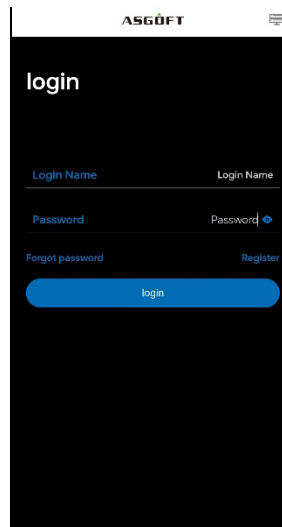


Figure 1-2

There are two methods for password recovery. One is to reset the password through email, please ensure that the correct email address was provided during registration. The other method is to reset it by scanning the SN code of the connected smart lithium battery pack.

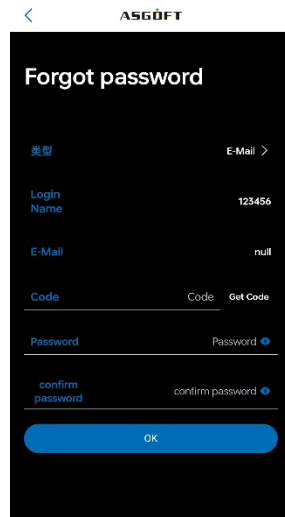


Figure 1-3

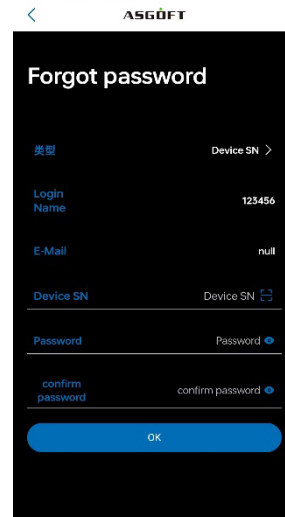


Figure 1-4

2.Network Connection

Press and hold the Power button on the device until the indicator light stays on steadily, indicating the device is powered on. When multiple modules are connected in parallel, each module needs to be powered on individually.

For the first-time network connection of a module, press and hold the WiFi button on any module for about 5 seconds until the button indicator light flashes, indicating that the device has entered the Network configuration mode.

If a module is being connected to the Network for non-initial setups, wait for approximately 30 seconds after powering on, and when the WiFi light stays steady, press and hold the WiFi button for about 5 seconds until the indicator light flashes to enter the Network configuration mode.

To add a new device, as shown in Figure 2-1, select the device type (ASE-1000) as depicted in Figure 2-2. In Figure 2-3, click on "Network configuration," select the network (mppt_XXXX), connect to the network, and then return to enter Figure 2-6.

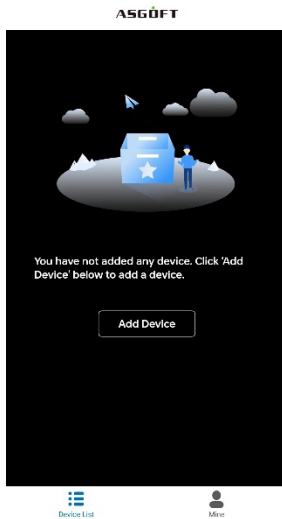


Figure 2-1

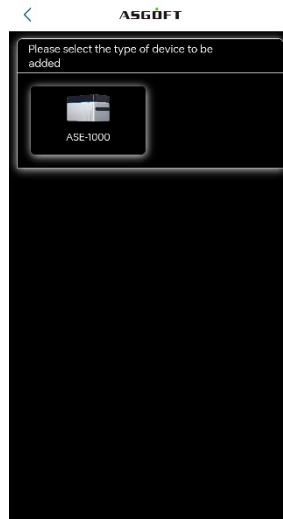


Figure 2-2

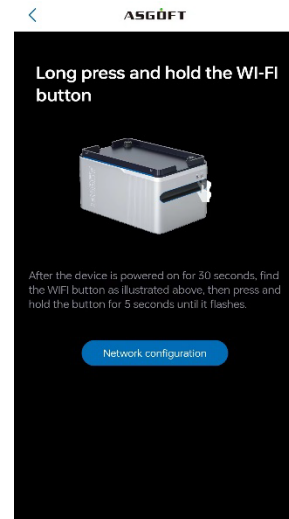


Figure 2-3

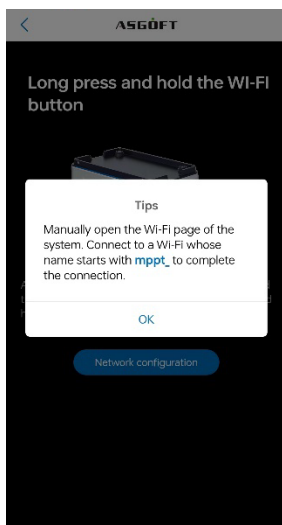


Figure 2-4

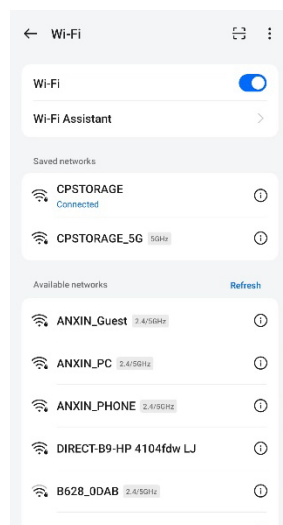


Figure 2-5

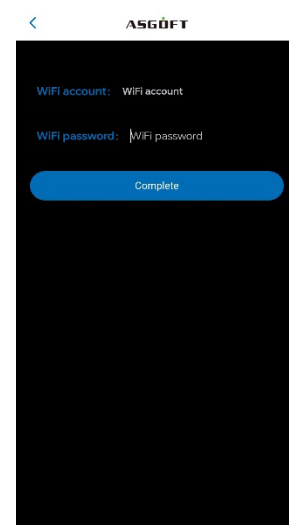


Figure 2-6

In Figure 2-6, enter the nearby available WiFi account and password, then click "Complete." If the device is outdoors and there is no WiFi available, turn on the personal hotspot, enter the personal hotspot account and password in Figure 2-6, and click "Complete" (When prompted with "Allow WLAN Assistant to switch to a better network," click "Disallow." For Android phones, it may prompt "Keep the network.").

Note: Only 2.4GHz WiFi is supported.

The page will display the number of devices added this time. Android phones can click "Confirm" to directly proceed to the next page. iPhone users need to manually go to the WIFI settings, connect to WIFI, then return to the APP to enter the WIFI username and password. The connection method for the smart plug is the same.

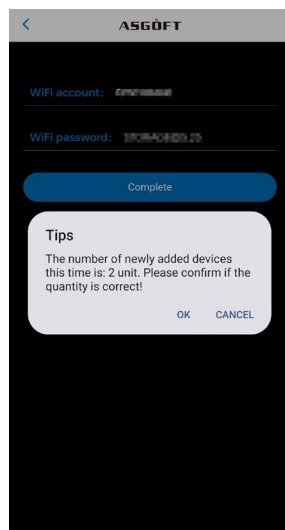


Figure 2-7

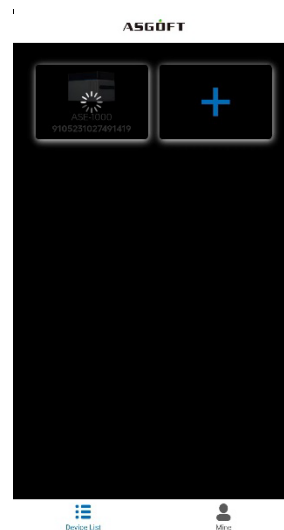


Figure 2-8

Click on the Smart Lithium Battery icon in Figure 2-9 to enter the scene interface. Upon successful network connection, the WiFi icon in the upper right corner will turn green.

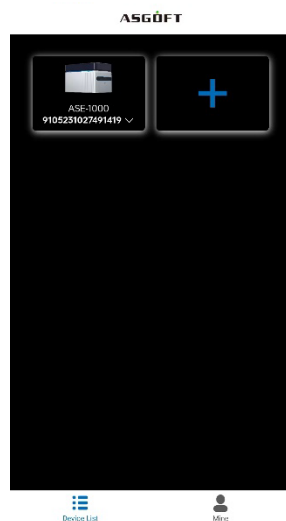


Figure 2-9

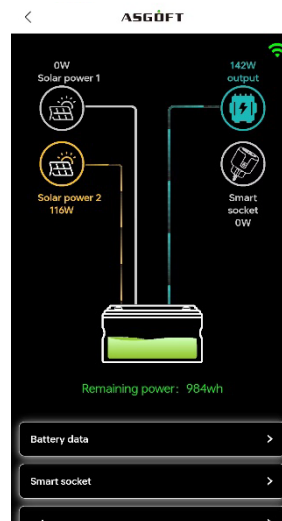


Figure 2-10

After successful connection to the network, data such as solar power, output, and smart socket status will be synchronized and uploaded. When the smart socket is actively delivering power, the icon in Figure 2-10 will illuminate, displaying the power consumption. The timing of power output display is linked to the startup time of the microinverter. Therefore, the upload time for output data depends on the microinverter's initiation time, with data being updated every 3 seconds once connected to the microinverter.

(Special note: When the WIFI is connected successfully, the WIFI icon will be green, and the micro inverter icon will be gray. In this case, the micro inverter is in the process of starting up. The start-up time may vary depending on the brand of the micro inverter; some may start within 3 minutes, while others may take 5-8 minutes to start. This is not related to the APP's operating speed. Once the micro inverter has started, it will be displayed on the APP.)

3.Function Settings

1)Battery Data: Displays the data for each smart lithium battery pack.

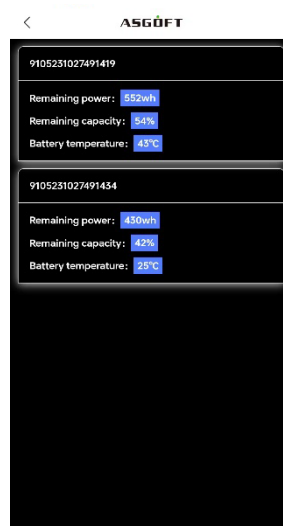


Figure 3-1

2)Smart Socket: Add / Delete smart sockets.

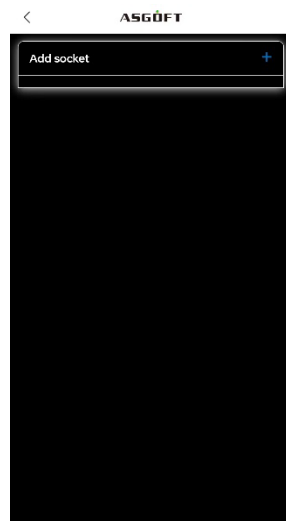


Figure 3-2

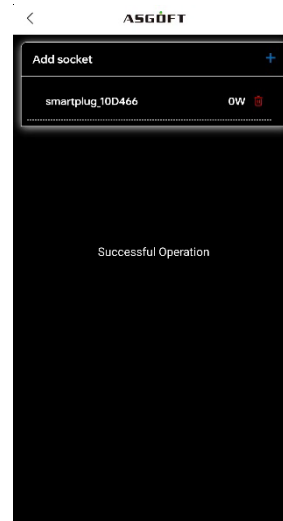


Figure 3-3

Note: The smart socket needs to complete network configuration before data upload can be achieved. The specific network configuration method is as follows:

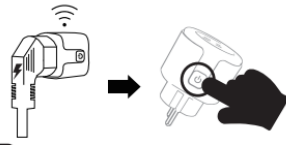
Connection Method

1

Press and hold the top button of the socket for 5 seconds after powering on to enter the network pairing mode.

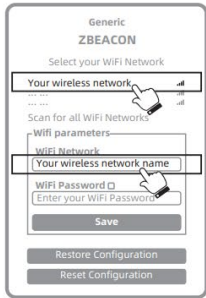
2

Enter the Wi-Fi settings on your phone/computer and look for a network named "smartplug_XXX". Connect to this network.



3

Once connected, your phone/computer will automatically redirect to the socket's network setup page. Select or enter your Wi-Fi network name, input the password, and click the "Save" button to complete the network setup.



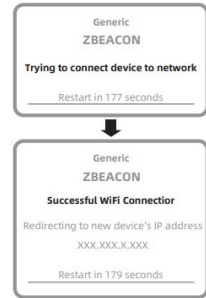
1 Click on your wireless network or enter the name of your wireless network



2 Enter your WiFi password



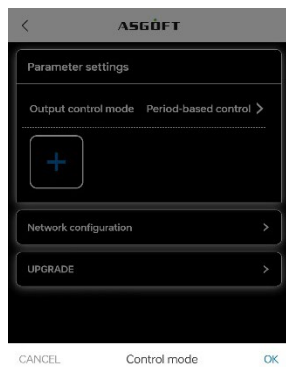
3 Click "Save"



4 Connection Successful

3) Output Control Mode: In the "Setup" section, click on the Output Control Mode, where you can choose from three modes: Period-based control, Automatic operation, and Constant Power Output. The Constant Power Output can be set between 100W to 800W, with Period-based control set at 30 minutes per level. Automatic operation requires matching with the smart socket (minimum output of 100W during Automatic operation).

The automatic operation option needs to be used in conjunction with a smart plug. When in automatic operation mode, the battery will adjust its power output based on the actual power output of the smart plug. For example, if the load on the smart plug is 300W, then the battery will provide 300W of power output to the micro inverter, and the power output displayed by the micro inverter will synchronize accordingly. If the input power of the smart plug is less than 100W, then the power output from the battery to the micro inverter will also be adjusted to 100W because the default minimum output power of the battery starts at 100W. The range of power output from the battery is 100W-800W.



CANCEL Control mode OK

Period-based control

Automatic operation

Constant power output

Figure 3-4

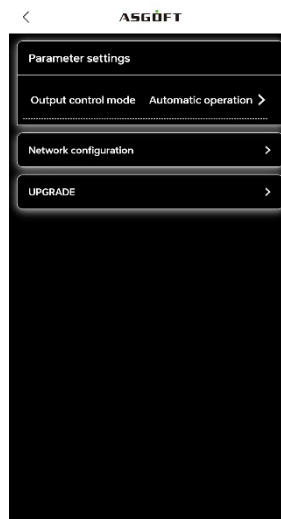


Figure 3-5

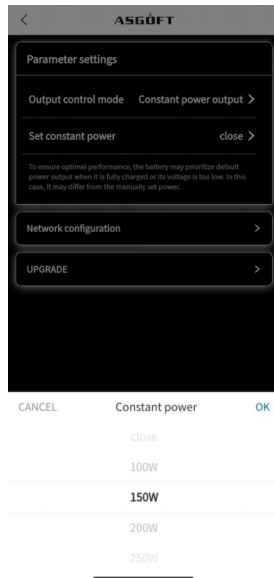


Figure 3-6

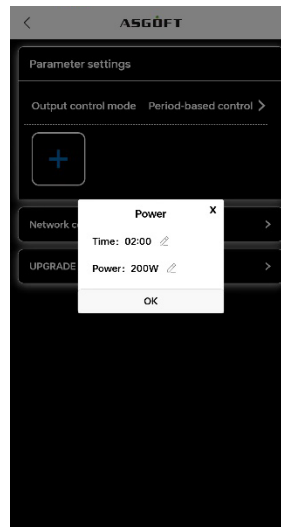


Figure 3-7

4) Upgrade: Click on "Upgrade", and please refrain from operating the devices during the upgrade process.

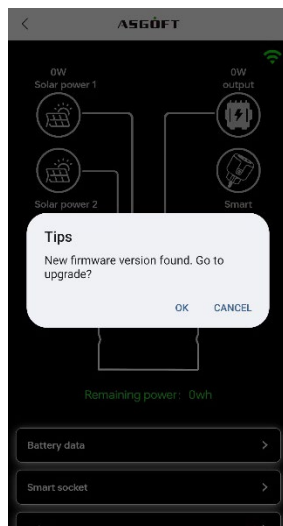


Figure 3-8

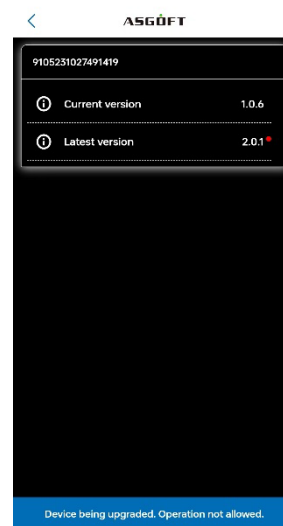


Figure 3-9

Note: During the upgrade, the WiFi light will be off, and there is no need to operate the device. The upgrade process takes approximately 10 minutes. After the upgrade is complete, if there is no input power at that time, the Power and WiFi lights will be off, and the device will stop working. If there is input power, the device will automatically start network operation.

5) Statistics: You can view the total power generation, historical power generation, photovoltaic power generation curve, output power curve, etc. You can also adjust the sliders below the power curve to obtain curves for different time periods.

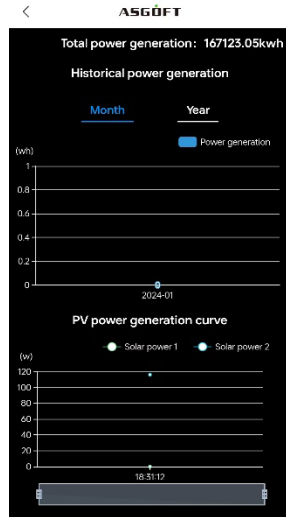


Figure 3-10

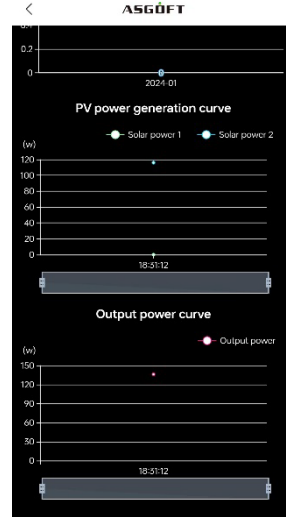


Figure 3-11

6) Delete: Remove the added smart lithium battery pack.

4.Account Logout

On the personal center page, click "Log off." A prompt will appear, as shown in the following image. Click "OK" to proceed with the account logout.

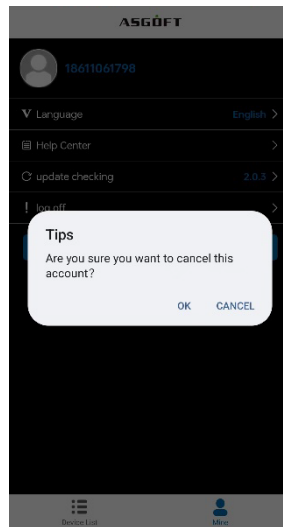


Figure 4-1